

Matt Harber

facebook.com/infinite.thread

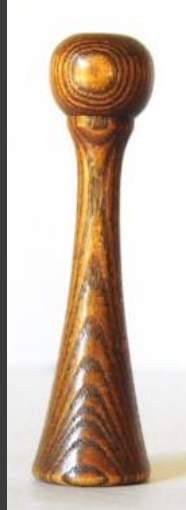
mharber@mail.com

(248) 320-1958

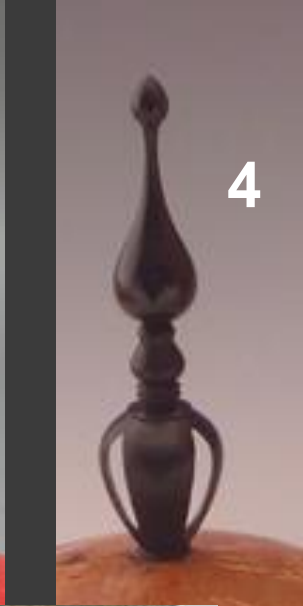
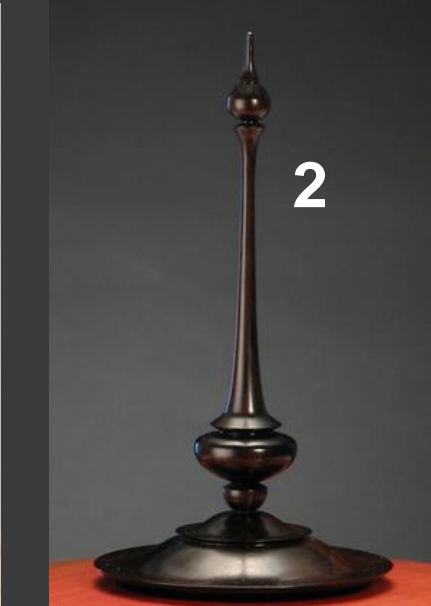


**WOODTURNED
FINIALS**

Examples:



Examples, continued:



Icicle finials
←

Steps:

1. Between centers, turn the tenon and base. This end will be gripped with the jawed chuck, so make sure the tenon and the underside of the base are square.
2. Put the tenon created in step 1. into the jawed chuck. Bring up the tailstock as well.
3. Begin turning the finial, from the tailstock and moving towards the headstock.
4. When chattering or bowing is detected, finish the tailstock end and remove the tailstock.
5. Any pressure applied by tools or sanding must be matched by equal pressure, to minimize bowing and/or chatter.
6. If necessary, bring in a steady rest (or similar device) to reduce vibration on the free end.
7. Take VERY thin cuts with SHARP tools. Especially if the stem is getting very thin.

Links and Resources:

- Cindy Drozda, "Making a Sputnik Sea Urchin Ornament with Turned Wood Finials - Part 2" - YouTube.com. Link: <https://www.youtube.com/watch?v=SnnYqDRGGb8>
- In the DAW library: Cindy Drozda, "Turning A Fabulous Finial Box".
- String Steady Rest: http://www.hiltonhandcraft.com/Articles/String_Steady.asp
 - Plans: <http://www.hiltonhandcraft.com/Articles/String%20Steady%20plans.pdf>
 - Notes:
 - I made my own waxed string by melting some beeswax and dipping ordinary kite string into the liquid wax, until it was all covered. No other additives, just pure beeswax.
 - Draw all your lines and points and circles BEFORE cutting out the center, so that you have a central reference point.
 - I personally found the 3-point wrapping scheme to work better for me, it seemed to be self-centering, which I found very helpful, especially if I had popped the finial out of the chuck.
- String Steady Rest #2: <http://www.scrollsaws.com/WoodLathe/woodlatheString.htm>
There are PDF files at this link with jig designs.