



June 2021

“Heroes are made by the paths they choose, not the power they are graced with.”



Joe and Marilyn Kline  
delivering a dozen of Wig



### ***Making A Difference***

***The WorldWideWoodturners organization often presents challenges to our membership. Challenges are designed for members to explore design, manufacture, and finishing techniques.***

***In the recent past, we have presented the 2X4 challenge. This is where a member creates a piece of his/her work using only building products. Using recycled materials is also a plus in this challenge. We have Doubled Down on our most recent challenge. This is where members create a donation project to a great cause and use 2X4 material to accomplish that.***

***To date, WWW can account for over 100 such stands created and donated by our members. This is a great program for recovering cancer patients who are seeking some normalcy during this difficult time. The rules or guidelines are simple.***

***Turn a wig stand***

***Donate it to a local Oncology group or home.***

***Feel good about what you have done.***

***There are no requirements or limits. All woods are acceptable, and just about any finish will suffice. I would recommend that the crown and base be about 5.5” in diameter, the shaft would be about 1.5” in diameter, and 10” to 15” tall. A slight crown on the cap will assist the patient in keeping the wig in the proper shape.***

***I have seen some fantastic work, created with shop scraps, which could be entered in art displays. But, I’ve also seen work created with fine or exotic woods, which would make any lady proud. It’s your choice, all you have to do is turn wood.***

***Please join WorldWideWoodturners as we make a difference.***

## DEMONSTRATIONS:

WORLDWIDEWOODTURNERS PRESENT VIRTUAL DEMONSTRATIONS AS A PORTION OF THE WEEKLY ZOOM MEETINGS. THESE DEMONSTRATIONS ARE PRESENTED BY MEMBERS OF OUR CLUB AT NO EXPENSE TO THE MEMBERSHIP.

DEMONSTRATIONS VARY FROM MEETING TO MEETING AND CAN INCLUDE DESIGN, LAYOUT, TURNING, FINISHING TECHNIQUES. ALSO, REGULARLY, THE CREATION OF NEW TURNING TOOLS IS DEMONSTRATED AND ASSEMBLED.

AS A MEMBER, YOU ARE INVITED TO PARTICIPATE IN THIS PROGRAM. JUST CONTACT US THROUGH OUR WEBSITE, WWW.WORLDWIDEWOODTURNERS.ORG, OR E-MAIL US AT WORLDWIDEWOODTURNERS@GMAIL.COM

PLEASE JOIN US EACH WEDNESDAY EVENING AS WE HOLD OUR WEEKLY VIRTUAL MEETING. IT IS OPEN TO EVERY WOODTURNER IN THE WORLD, NO MEMBERSHIP, NO DUES, NO MAGAZINE; IT'S FREE!

### BALL END MILL SCRAPER

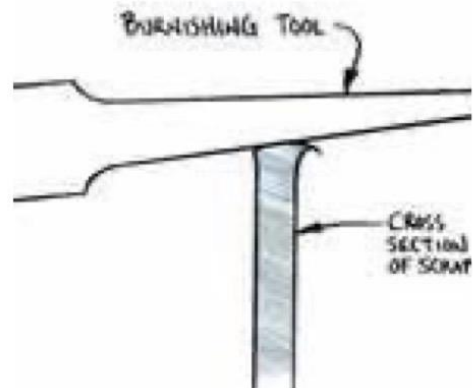
Recently, one of our members demonstrated a carbide-tipped scraper that was fantastic at hollowing bowls, cups, and sleeves. It had a fantastic ability to cleanly cut end grain and not leave tear marks from tool use.

By utilizing a Ball End Mill cutter, available from most machining supply sources, inserted into the end of a steel bar or heavy-duty stock. The preference is a 3/4" steel bar, from a local hardware store, drilling a 1/2" divot in one end for the mill cutter. It can be inserted and then held in place by set screws or thick CA glue.

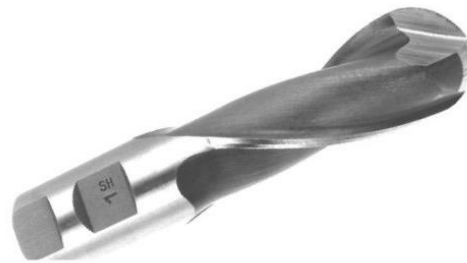
The tool is primarily used as a scraper but works well as a boring and shaping tool. Experimenting with the application on the exterior of a workpiece will provide you with some guidelines on applications and the degree of cut.

WorldWideWoodturners.org

Well, another day has passed, and I didn't use algebra.



Some turners get confused by the "scraping" term used to describe some of our tools. Scrapers have been in use since man began working with wood. By placing a burr on the leading edge of the cutter, you create a hook effect that slices off the surface of the material. This action will remove a very slight sliver of the material. Often smoother than sanding.



Drill America - DWCT1114 7/16" X 1/2" High Speed Steel 2 Flute Single End Ball End Mill, DWC Series. HSS, not carbide. Available through Amazon.



June 2021

# Turning Point

WWW Turning Point Gallery is comprised of photos provided by our membership. If you would like to share your work with our group via our webpage, newsletter or website; please send the photo via e-mail to [worldwidewoodturners@gmail.com](mailto:worldwidewoodturners@gmail.com)



Kade Bolger



Rick Barnes



Arnold Beauchamp



Bob Moffett







Rick Barnes



Waukeen Vinson



Ronnie Bonnette



If you can hold it, you can turn it.

Doug Rowe



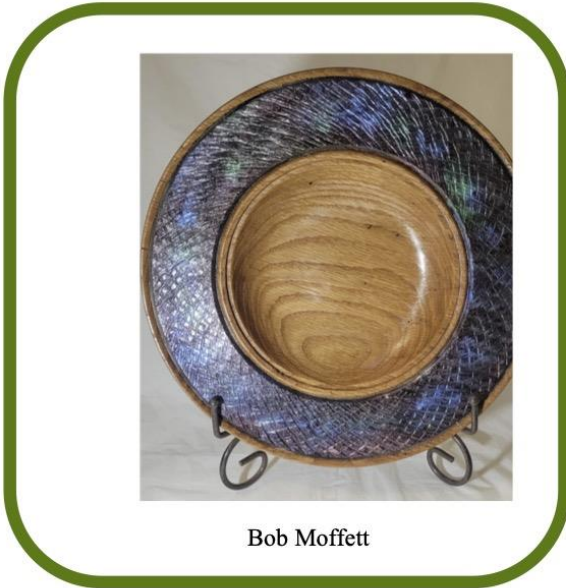
WorldWideWoodturners.org



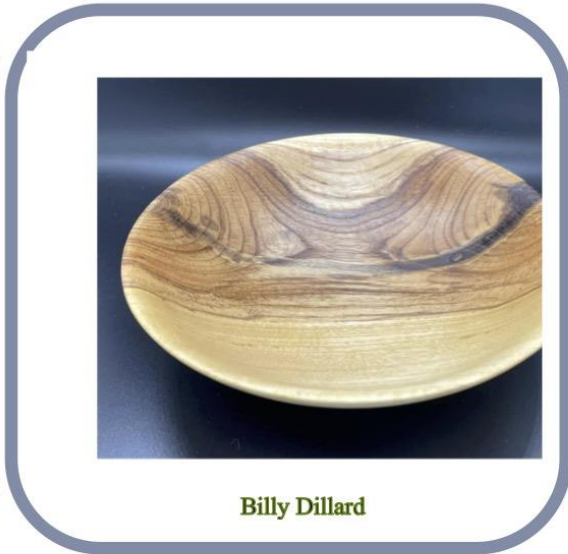
Larry Canterbury



June 2021



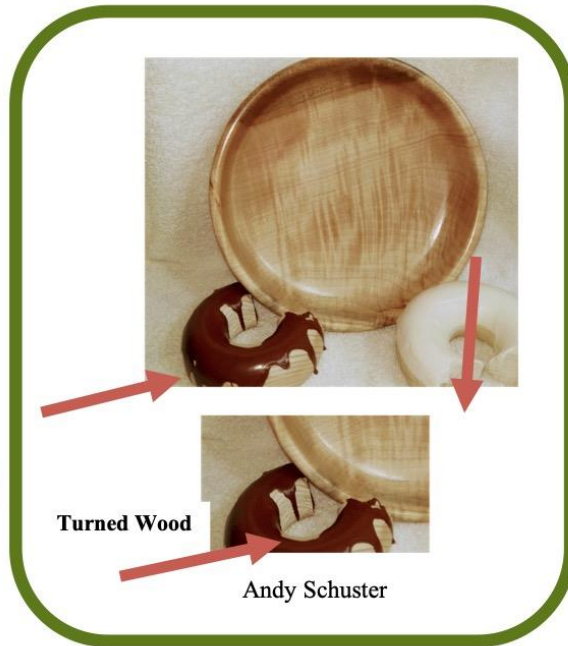
Bob Moffett



Billy Dillard



Kade Bolger



Turned Wood

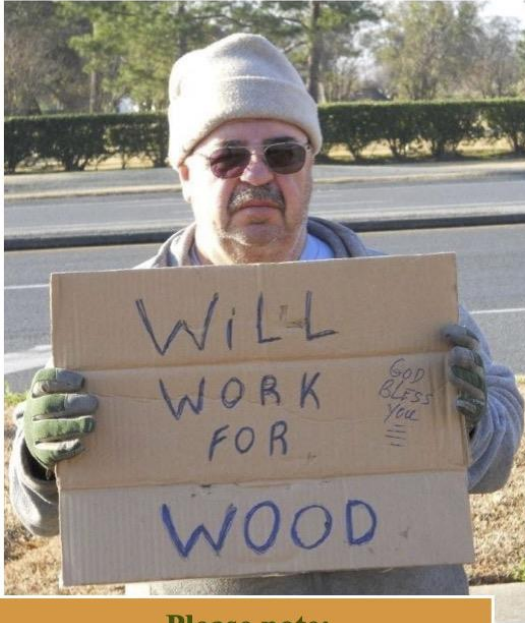
Andy Schuster



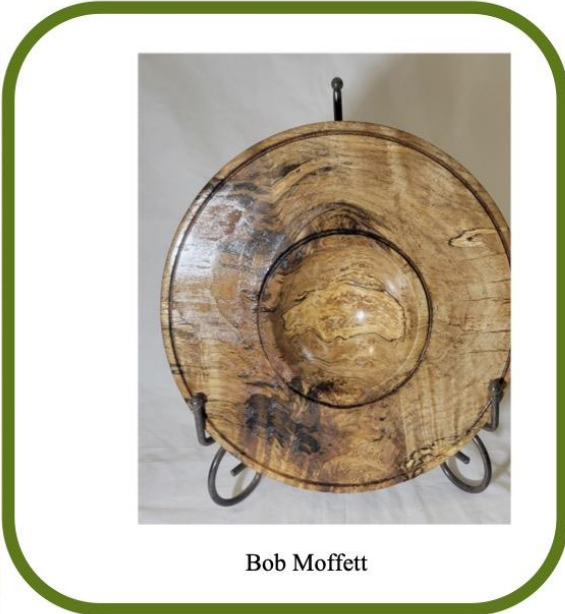
WorldWideWoodturners.org



June 2021



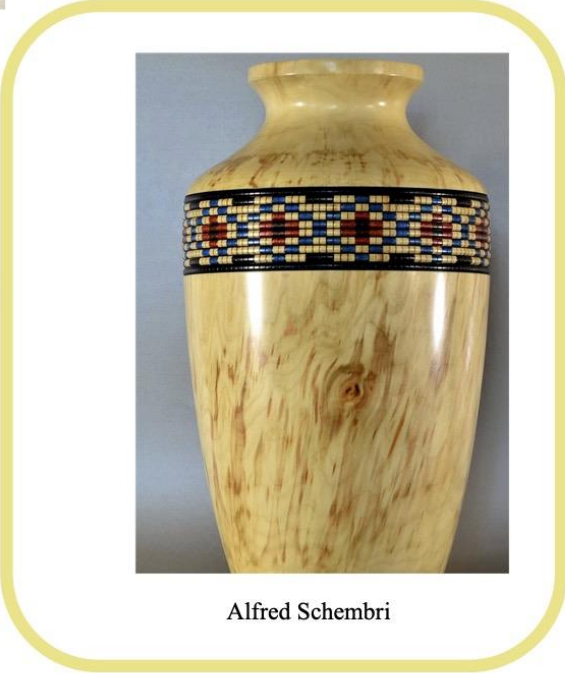
**Please note:  
I am heavily armed and willing to  
fight my way to some good turning  
stock.**



Bob Moffett



Billy Dillard



Alfred Schembri







When there isn't a saw horse.....

**Just want to see how many people think that shop class should be put back in our schools...if you are 1 of the few, re-post**



Hand Treaded, CA cured, Waxed.



Bob Moffett



Bob Grinstead



Rick Barnes



## DUPLICATES?

THE PHOTOS YOU ARE VIEWING WERE PROVIDED BY OUR MEMBERS, YOUR WOODTURNING FRIENDS. YOU MAY NOTICE THAT THERE ARE MULTIPLE PHOTOS BY THE SAME TURNER.

THIS IS ONLY BECAUSE THEY PROVIDED THEM.

IF YOU WANT TO PART OF THIS NEWSLETTER, AND OUR WEBSITE, JUST SEND YOUR PHOTOS TO:

WORLDWIDEWOODTURNERS@GMAIL.CO

**Never seen anyone jogging and smiling, so that's all I need to know about that.**



Waukeen Vinson



Terry Reynolds

## WANTED!

Passage from New Orleans, LA to and from Waco City, Texas to attend 2021 SWAT symposium. I am willing to ride in the back of a pickup if necessary.

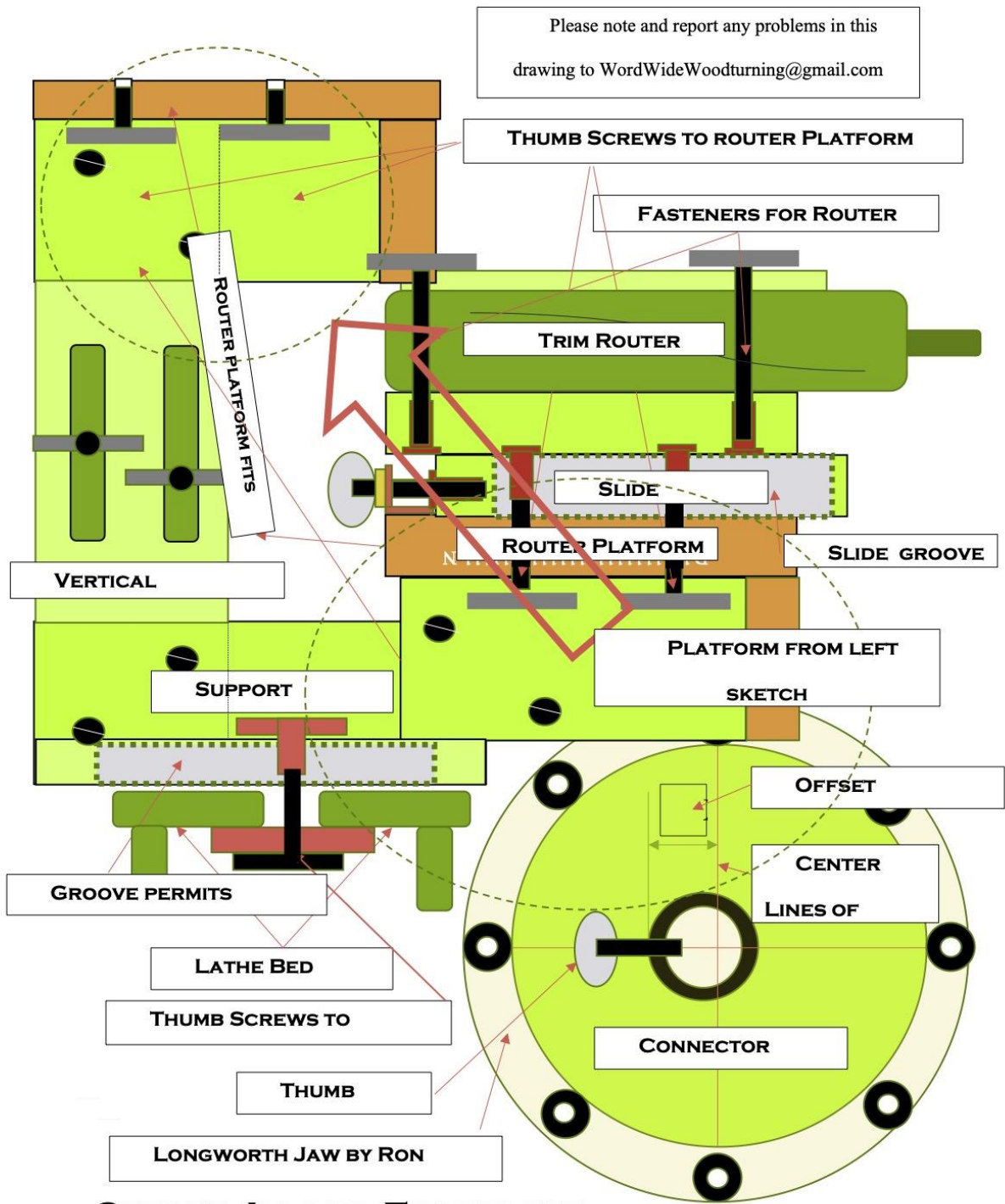
I'm willing to part with up to 6 (six) eight-foot lengths of 2" X 4" SYP lumber. (this material is of good grain and quality,)



Cap'n Eddie Castelin







## OFFSET JIG AND FACEPLATE

WorldWideWoodturners.org



June 2021

## OFFSET TURNING

A few years ago, I experimented with some offset turning on my conventional lathe. I did some “spiraling” by turning on offset points.

I developed some nice effects by using a wide roughing gouge to slice with. Although strange, it was spindle turning on a different level.

I was then wondering what effect I would receive if I traded in my roughing gouge for a small router with a cove cutter. (shape doesn't matter) It was worth the effort, but with a little work on jigs.

I figured that I could devise a holder to support the router, with a screw-driven feed, to feed the cutter to the work

During my experimentation, I found that I could perform this action with the power of the router doing the cutting and the power of my left hand providing rotation.

With the Power Off, I can control the rotation torque and speed. Feeding the cutter as slow as necessary to prevent tearing, digging, or burning. I could perform the necessary roughing cuts, then polish it off with light cuts for the luster I wanted.

The holder for the router is a shop-made tool to fit your machine. (this will work on a mini-lathe) I made mine from double thicknesses of ¾” plywood, the better the material, the better support and lack of vibration.

I made mine slide up and down because the change in cutter position will change the groove entry and exit. (experimenting is helpful, also changing the width or shape of the cutter helps in variations) The key is stability, vibration will be your enemy.

The horizontal adjustment can be driven by a simple threaded rod and tee nut. But just a slide with a carriage bolt arrangement will work. Remember, you can eat an elephant with a teaspoon.

WorldWideWoodturners.org



Offset Stem

The offset chuck is easy to create, you can even use a set of Longworth Jaws, like Ron Brown's Best, to help you rotate the socket to different rotational cycles.

A wooden faceplate drilled to hold an epoxied tube (a short piece of pipe) with a drilled and tapped set screw to hold the workpiece. Drill it slightly off-center to provide the offset you want or need. I make mine about ½ of the diameter of the stock. You should consider creating several versions with different offsets. The groves do not need to all be of the same depth. It's all in the design or art.

I always use carbide-tipped cutters for clean, polished cuts. You should try to avoid sanding.

I have provided a rough sketch for both the holder and faceplate. I'm working on a video to explain its use. I'll post on the website just after I can return to the shop.

Cap'n Eddie Castelin



Timber Seeds?



June 2021

**I bet you would be really motivated if the weight you lost went to somebody you don't like.**



Dane Chandler



Steve Clark



Bob Moffett







What I consider one of the finest woodturning symposiums in the world, SWAT, has again scheduled its annual program for this summer.

The program will be in its regular location, Waco Texas, from August 27 through August 29, 2021. The annual program was canceled in 2020 because of the onset of Covid.

The organizers, a group of over 30 woodturning clubs, have been working diligently to overcome the obstacles presented by the virus. As of May 14, 2021, registration is now open to the public because planning is now finalized. That is due to change shortly and we are all waiting on that notice.

Currently, the organization is working on difficulties with spacing, meals, and housing. Besides, the anxious attendees and the merchants are chomping at the bit to get in the gathering.

This is a rather unique program for woodturners because of its founders and their attitude on spreading the wood on woodturning. The entire program, which includes demonstrations, meals, and the ability to talk one-on-one to some of the top woodturners in the field, is available at one simple cost. The sales area is open to the General Public at no cost and provides access to all the new tools, gadgets, and programs dealing with woodturning. It is also a great place to stock up on turning materials and finishes.

The *Waco Convention Center* is in the heart of the city and many different levels of hotel accommodations are available within walking distance.

As a description of this program, I always say that "this is like a family reunion with family you like".

I'm looking forward to seeing all my family there.





**Want to Join In?**

**Membership is free, open to the entire world  
and does not come with any commitments.**

## **WORLDWIDEWOODTURNERS.ORG.**

### **WHO ARE WE?**

**WIDEWOODTURNERS IS AN ORGANIZATION OF WOODTURNERS ASSEMBLED FOR ONE REASON, TO SPREAD THE WORD ABOUT WOODTURNING. WE STAND AS AN INDEPENDENT CLUB WITH NO FINANCIAL OR COMMERCIAL SUPPORT FROM ANY ASSOCIATION, BUSINESS, OR CLUB.**

**WE WERE CREATED BY A GROUP OF TURNERS WHO WANTED TO EXPAND OUR WORLD WITHOUT RESTRICTIONS. WE BELIEVE THAT THIS WORLD CAN EXIST AMONGST THOSE WHO ARE PERFORMING THE SAME TASK ON A "PAY-PER-VIEW" BASIS OR SUPPORTED BY MANUFACTURERS. I HAVE NO OBJECTION TO THIS FORMAT. BUT TURNERS ON A RESTRICTED BUDGET WOULD LIKE TO FIND A SOURCE FOR INFORMATION. THAT IS OUR GROUP, WORLDWIDEWOODTURNERS.ORG. CREATED IN THE FALL OF 2019, WE WERE ORIGINALLY COMPOSED OF ABOUT A DOZEN MEMBERS. WE'VE GROWN TO A WORLD-WIDE STATUS WITH THE ASSISTANCE OF THE INTERNET, AND ESPECIALLY THE ZOOM NETWORK.**

**OUR WEEKLY MEETING OCCURS EACH WEDNESDAY EVENING VIA ZOOM. WE GATHER AT 6:00 PM CDT FOR A LITTLE BS, JUST LIKE THE SESSIONS ON THE TAILGATES OUT IN THE PARKING LOT. NO FORMAT, NO RULES, JUST QUESTIONS, ANSWERS, AND A LITTLE GALLERY. WE THEN MOVE INTO A REAL MEETING AT 7:00 PM CDT. THIS IS WHERE YOU CAN ENJOY A "NO-COST" DEMONSTRATION BY ONE OF OUR MEMBERS, PERHAPS YOUR NEIGHBOR.**

**THIS IS LIKE A FAMILY AFFAIR WITH A FAMILY YOU DO LIKE. THERE ARE LOTS OF SAFE JOKES, KIDDING, ADMIRING, AND SHARING WITH OTHER WOODTURNERS. COME ON IN AND JOIN US, YOU AND ALL YOUR FRIENDS ARE WELCOME.**

**CAP'N EDDIE CASTELIN  
MEMBER.**

