



Wood Turners Worldwide

worldwidewoodturners.org and the art of making shavings

Newsletter

OCTOBER 9, 2024

VOLUME 1 NUMBER 21



Johnny Hughes



Jeff Walters



Chuck Brown



Gerard Dubois



Dale Slaughter



Vic Laberge



Doug Miller



Patrick Hoggard



Bob Grinstead



Frans Brown



Dan Richey



Gonzalo de la Cruz



Robert Edwards

Cover, Clockwise from top left: Turned projectiles for 20mm MK103 bullets. Top portion is maple and lower portion is cherry. The cherry was drilled 5/16 and turned a 5/16 tenon on the maple, glued square before turning to final dimensions; Segmented vessel of maple and cherry; Lidded box of teak and mahogany with a bog oak finial; Maple and cocobolo segmented vessel. **Facing page, clockwise from top left:** Box elder garlic keeper; "Tumbling Times" segmented bowl, black ash and scrap woods; Black walnut box, ebonized, textured, carved and gold inlaid; Mahogany and bloodwood segmented bowl; Curly maple ornament with rosewood burl and maple finials, dyed for color effect. **This page clockwise from top left:** Sycamore dish with hammer effect, walnut feet; Collection of Christmas ornaments; Texas honey mesquite hollowform; Unknown wood hollowform.



Brenda Thornton



Tony Attard



Ron Kisko



Bill Louch

Top: A collection of "magic" salt and pepper shakers turned after a World Wide Woodturners Wednesday night demonstration. Notice the split shaker, showing how they are constructed; **Middle left:** Poplar burl natural edge bowl; **Middle right:** Russian olive bowl; **Right:** Russian olive flower pot. **Facing page, clockwise from top right:** Cherry hollowform with ebonized holly stem and finial. The embellishment is tissue paper painted with black acrylic; Continuing turnings from recent demonstrations during WWW meetings, a collection of napkin holders; Carved and painted cherry goblet; "Calico" wood box made using cutoffs of multiple species; A collection of recently turned pens, both wood and resin.



Howard King



Brenda Thornton



Joaquin Juatai



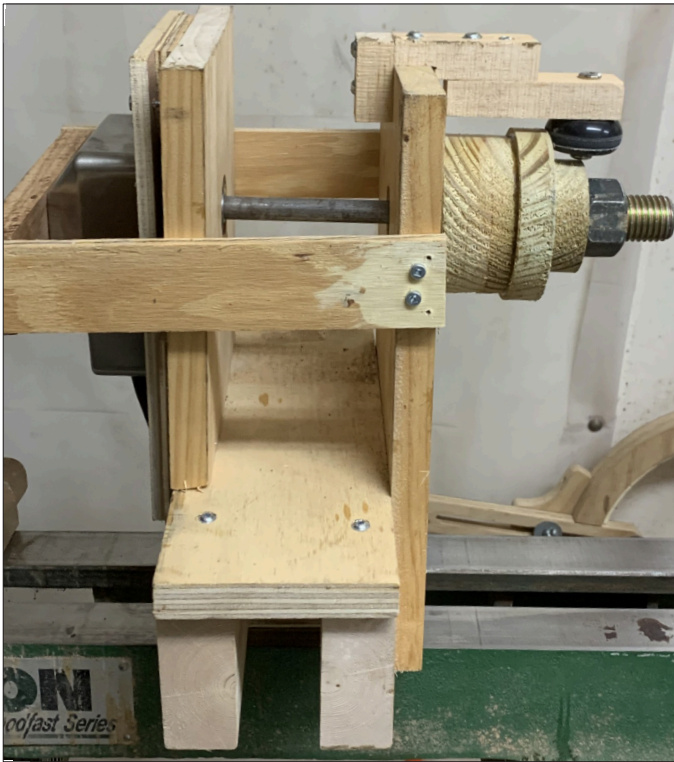
Matt Harber



Scott Medori

Editor's note: I broke the one photo per artist rule in order to share how our club members learn from weekly demonstrations put on by World Wide Woodturners! Brenda Thornton is knocking it out of the park and showing us all how educational our demonstrations can be! Great work Brenda!

Slow RPM Rotary Tool for Epoxy Finish



By Dallas Hensley

I am a member of Ozark Woodturners in Mountain Home AR. A few of our members finish their turnings with CA glue. I have been envious of this practice because my lathe will not go slow enough for application. I thought for several months about this and came up with the following for applying an epoxy resin finish.



A BBQ rotisserie provides the turning at 5.5 rpm. Keeping it turning keeps the resin from pooling and allows it to spread out evenly. It is mounted on a 1/4" plywood piece and attached to a 1/2" piece and has support around it to make sure it stays in place.

A 1/2" steel rod was ground square for insertion in



drive of rotisserie with bearings going through both upright supports (left).

The lateral framework (reengineer #2) is to keep the front vertical from spreading and allowing the metal rod to come out of rotisserie, causing the piece to stop spinning (seen to the left, as well).

The working end has the metal rod epoxied into a wood segment. The 1"x8TPI bolt is set into the next piece of wood. I wanted to be able to use the



jaws that the piece was turned in to connect directly to the rotisserie. The wheel at the top is to keep the entire piece from falling off in the floor (yes it happened, reengineer #1). Notice it's a luggage wheel, the same type of wheel I used for the steady rest you can see hanging on the wall behind lathe.

Below is This is the first big piece completed with this rig. 13-1/4" x 4-1/2".



Level-up

World Wide Wood Turners
Worldwidewoodturners.org

- 3 Full Days of Demonstrations
- 4 Complete Turning Pods
- Multiple Turning Instructors

Wood Tools
Raffles
Friends
Display Gallery

Open to All

September 2026 Wisconsin Rapids Wisconsin

levelup@worldwidewoodturners.org



Waukeene Vinson



Dean Humphrey

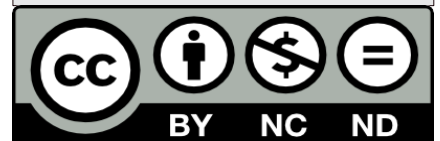


Robert Cox

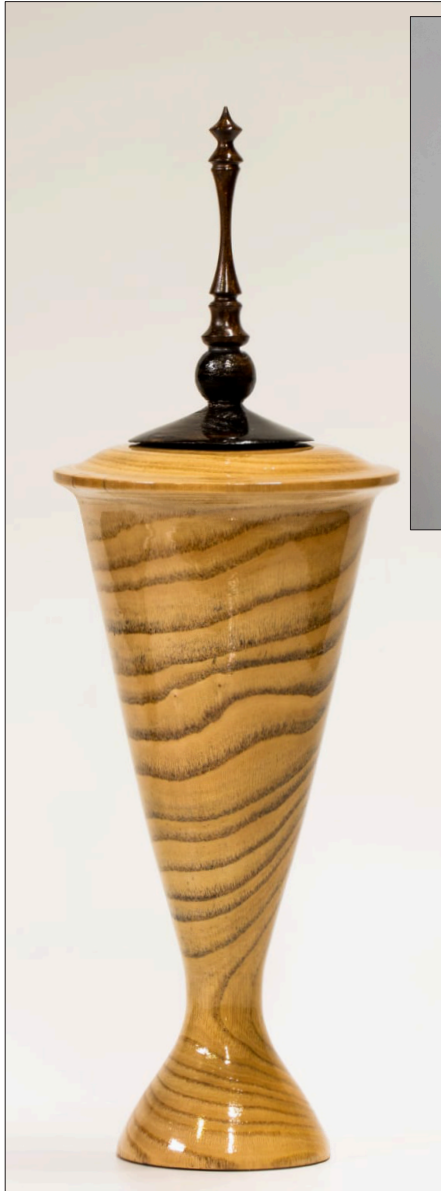
Wood Turners Worldwide

Capt. Eddie Castelin -
 Founder
 Dane Chandler -
 Administrator
 David Rhodes - Webmaster
 Joaquin Juatai - Editor

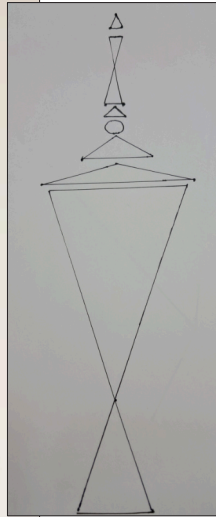
©2024 by
 worldwidewoodturners.org
 this work is openly licensed
 by CC BY-NC-ND. For more
 information visit
[creativecommons.org/
 licenses/by-nc-nd/4.0/](https://creativecommons.org/licenses/by-nc-nd/4.0/)



Top right: Maple Bead of Courage box; **Bottom left:** Olive wood hollowforms with maple feet and finials; **Bottom right:** Thuya burl on the Metro pen kit.



Enzo Palladino



Billy Burt



John Koscinski



Jon Moore



Joaquin Juatai

Top left: Chestnut wood vase with a wenge finial. The drawing shows the design principle, overlapping many triangles; **Right:** Live edge Catalpa bowl; **Middle left:** Segmented vessel of multiple species; **Middle right:** Purple heart and ebony bottle opener/corkscrew; **Bottom:** Wizard's wand with an ebony hilt and bloodwood blade.