



# Wood Turners Worldwide

worldwidewoodturners.org and the art of making shavings

## Newsletter

OCTOBER 23, 2024

VOLUME 1 NUMBER 22



Dewey Johnson



Jeff Walters



Vic Laberge



Billy Burt

**Top left:** Garden Vase turned, hollowed, and carved from cherry. Embellished with a five step process using metallic paints; **Right:** Hard maple, Peruvian walnut and paduak segmented vessel; **Bottom left:** Mushroom Box, bottom dyed green, mushroom cap dyed tangerine and yellow. Underside of Mushroom cap is engraved with gills around the outside and a gnome sitting in front of a Mushroom on the inside. **Right:** Ash, walnut, bloodwood and locust sunrise bowl.



Heather Budarick



Ron Kisko



Doug Miller



Jim Selby



Gerald Jensen



Howard King



Shannon Dunlap

**Facing page clockwise from top left:** Paper birch and black walnut ornament; Poplar bowl colored with golden black Gesso and holiday red; Cypress vase with water drop effect; Oak spinning top; **This page top left:** Multi-axis bird toothpick holders; Red mallee burl and purple heart elevated box; **Left:** cedar candy dish.

# Open Segment Gluing Platform



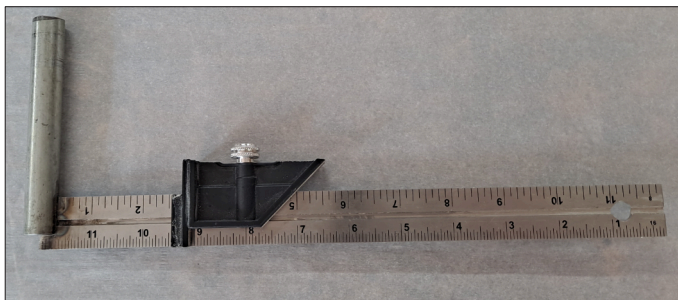
**By Bob Grinstead**

Ever wanted to create an open segment bowl or vase? Here is an easy to make open segment gluing platform. This jig will allow you to position each piece at the correct radius for the ring. An index wheel will position the turning at the correct position for gluing on a segment.

You need:

- 1) 12" combination square
- 1) 1/2" or 5/8" dowel, 3" long

Epoxy or Shoe Goo



- -Cut a slot in one end of the dowel the thickness and depth of the ruler in the combination square.
- Glue or epoxy one end of the ruler in this slot. Aligning the end of the ruler with the center of the dowel. Making sure the ruler is at 90 degrees to the dowel.

- The top part of the miter slide with the level is not needed and can be cut off, leaving just the ruler slide and tightening nut.

- Cut a small wedge 1/4" W x 3/16" H x 1"L of wood or out of the plastic cut off in the above step. Glue or epoxy it to the right angle side of the miter slide against the ruler. Careful not to get glue in the slot for the ruler or on the ruler. (Some plastic wrap can be used to protect the ruler from the glue. This wedge is to make a spacer between the miter slide/stop and the open segment piece to be glued.



This will ensure the bottom of the miter slide will not interfere with the first segment as it comes around.

Setup:

Place a jacobs chuck in the tailstock. Place the dowel in the chuck and hand tighten.

The ruler should now be at a right angle to the bed. Adjust your tool rest to about the center height. Place your tool rest under the right edge of the ruler by the miter slide for support. Tighten the chuck so the new ruler jig doesn't move.



In use:

Use an index wheel to position the base or previous ring.

Use the ruler as a platform to position the segment piece.

Set the miter slide and spacer at the radius for the outside of the next ring.

Place a small amount of glue on an open segment piece and place it on the ruler next to the miter slide spacer and glue it in place.



Select a new index hole and glue on the next piece until all segments are in place completing the ring.



Tip: I like to use Titebond Quick and Thick wood glue to glue the segments on each ring. 5 seconds hold time is long enough to secure the segment before moving to the next one. 15 min. after the last segment you can sand the ring smooth, ready for the next ring.

Tip: Since this is open segment rings you will need to adjust each ring to establish where the segments are in relation to the previous ring. I move the tool post up or down a little to make this adjustment instead of trying to realign the index wheel. You will still need to use every other hole in the index wheel. 12 segments rings = 24 hole index wheel.

**Above right:** Final project.



**Level-up**

World Wide Wood Turners  
worldwidewoodturners.org

- 3 Full Days of Demonstrations
- 4 Complete Turning Pods
- Multiple Turning Instructors

Wood Tools  
Raffles  
Friends  
Display Gallery

**Open to All**

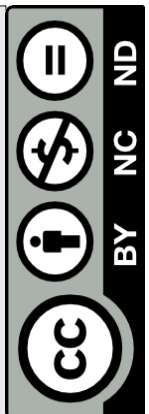
September 2026 Wisconsin Rapids Wisconsin

[levelup@worldwidewoodturners.org](mailto:levelup@worldwidewoodturners.org)

**Wood Turners Worldwide**

Capt. Eddie Castelin - Founder  
Dane Chandler - Administrator  
David Rhodes - Webmaster  
Joaquin Juatai - Editor

©2024 by worldwidewoodturners.org  
this work is openly licensed by CC BY-NC-ND. For more information visit [creativecommons.org/licenses/by-nc-nd/4.0/](https://creativecommons.org/licenses/by-nc-nd/4.0/)





Ron Herbster



Waukeene Vinson



**Free demos every Wednesday!**

Jeff Walters shared his technique for making this cocktail smoker during our weekly meeting Oct. 16<sup>th</sup>! Join us Wednesdays at 7 PM Eastern for free! Go to [worldwidewoodturners.org](http://worldwidewoodturners.org) and click "Go to meeting!"



Roger Wollam



Dale Slaughter

**Top left:** Maple vase, turned, carved, and embellished; **Right:** "Sputnik" sea urchin ornament; **Bottom left:** Walnut bowl; **Bottom right:** Icicle snowman ornaments.